

PINE VALLEY MIDDLE SCHOOL BEHAVIOR POLICY

I. Philosophy/Purpose:

Student behavior contributes toward the safety, moral responsibility, and promotion of lifelong habits. It is the intention of the Pine Valley Middle School to promote behavior that is conducive to classroom safety, learning and the moral development of all students.



II. Expectations:

Responsibility of the Student:

- * Dress according to the student dress code as dictated in the handbook
 - include footwear at **all** times
 - no wearing of hats/head covering inside the building
 - no promotion of alcohol, tobacco, violence or illegal drugs
 - skirt/shorts must be long enough to reach an extended fingertip
 - midriffs must be covered at all times
 - undergarments must be covered at all times
- * Respect the property of others including classmates, teachers and the district
 - keep out of other students' desks
 - ask before borrowing items from another person
 - only original work will be allowed (no cheating^ or plagiarism^ will be tolerated)
- * Respect the personal space of others
 - keep hands and feet to yourself at all times - control your body
 - no profane/vulgar language or gestures^
 - defamation of character (including false statements, rumors) is intolerable
- * Respect the classroom environment of others
 - walk in the hallways at all times
 - a quiet volume must be used in the hallways when transforming from class to class
- * Respect the authority of the adults in the building at all times
 - insubordination^ will not be tolerated
 - disruptive behavior will not be tolerated
 - violent behavior^ will not be tolerated (i.e. hitting, punching, scratching, weapon possession, intimidation of others)
 - lying^ to school personnel will not be tolerated
- * Cell phones/MP3s/gaming devices are **not** to be removed from the lockers at anytime during the school day
- * Maintain an atmosphere conducive to learning for all students

Responsibility of the Parent:

- * Support the decisions of school personnel as it follows the school district code of conduct.
- * Help your student get organized and be prepared.
- * Show interest in your student's behavior and discuss what is expected of them.
- * Contact the teacher if necessary to clear up any misunderstandings.

Responsibility of Teacher:

- *Ensure students are aware of what is expected of them.
- *Provide feedback in a timely manner.
- *Provide consistent and fair treatment to all students.

III. Penalties:

Students who have violated the Middle School Behavior Policy may be subject to the following penalties either alone or in combination. As a general rule, discipline will be progressive depending on infraction.

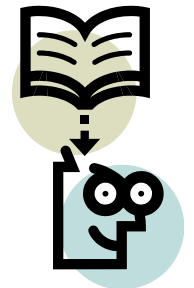
- * Oral warning
- * Written warning
- * Loss of privileges
- * Removal from classroom by teacher
- * Written notification to parent
- * After school detention
- * Suspension by administrator

IV. Progressive Loss of Privileges:

Automatic detentions will be tracked and the amount of detentions will dictate a loss of privileges. Those infractions with a ^ next to them indicate automatic detentions

- 1 automatic detention during a quarter = loss of quarterly fest
- 3 automatic detentions during the school year = loss of field days
- 4 automatic detentions during the school year = loss of end of year field trip
- 5 automatic detentions during the school year = loss of 6th grade recognition attendance

I have reviewed and understand this behavior policy.



Signature of Student Date

Signature of Parent/Guardian Date